

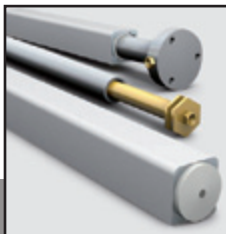


UT-MAX

for Lean Production



LEAN
PRODUCTION
DIVISION



UT-MAX

The only AGV of its kind



UT-MAX is a flexible system that can be setup for logistic needs of any kind. It is aimed at the optimisation and automation of production processes.

With its compact size it fits any kind of pre-existing carts leading to an enormous saving.

UT-MAX is a perfect high load capacity and towing vehicle.

It can be used with pre-existing routes based on magnetic or coloured stripes.

The system uses a Wi-Fi connexion that allows it to be constantly monitored and controlled from every place of the factory.

If an Internet connexion is available, UT-MAX can be also remoted-controlled.

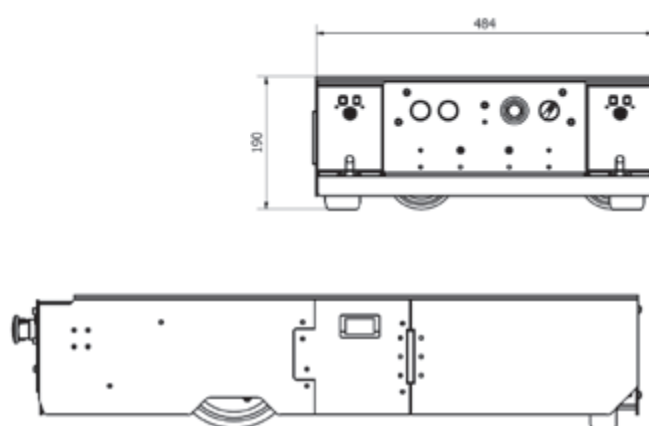
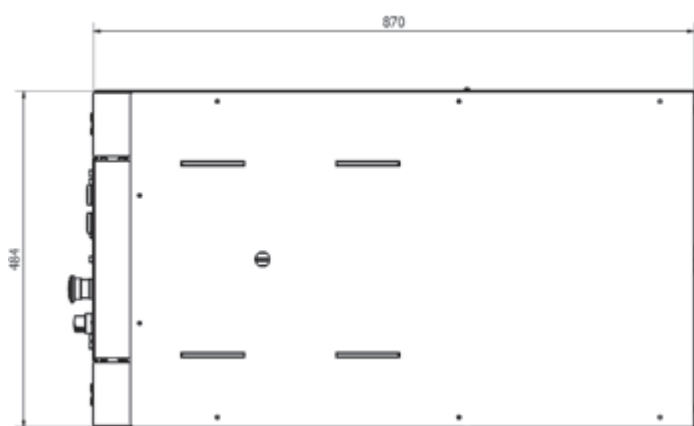
Advantages

- Status notifications by email and acoustic/optical signals
- Compact size
- Automatic load and release system
- Wireless programming
- Magnetic and coloured stripe recognition
- Optimal stopping accuracy
- Entirely modular and customizable
- Diagnosis and monitoring through smartphone
- Economically competitive
- Automatic route recognition
- Quick battery change
- Possibility of usage with already existing routes



TECHNICAL DATA

	UT-MAX 500	UT-MAX 1000
Max. speed	30 m/min (optional 60 m/min)	30 m/min (optional 60 m/min)
Traction	700 kg	1400 kg
Load capacity	350 kg	450 kg
Steering	Magnetic guide and coloured stripe	Magnetic guide and coloured stripe
Operating voltage	24Vdc	24Vdc
Batteries	2 x 33Ah (optional 2 x 120 Ah)	2 x 33Ah (optional 2 x 120 Ah)
Size	860 x 480 x 190 mm	860 x 480 x 190 mm
Weight	60 kg	70 kg



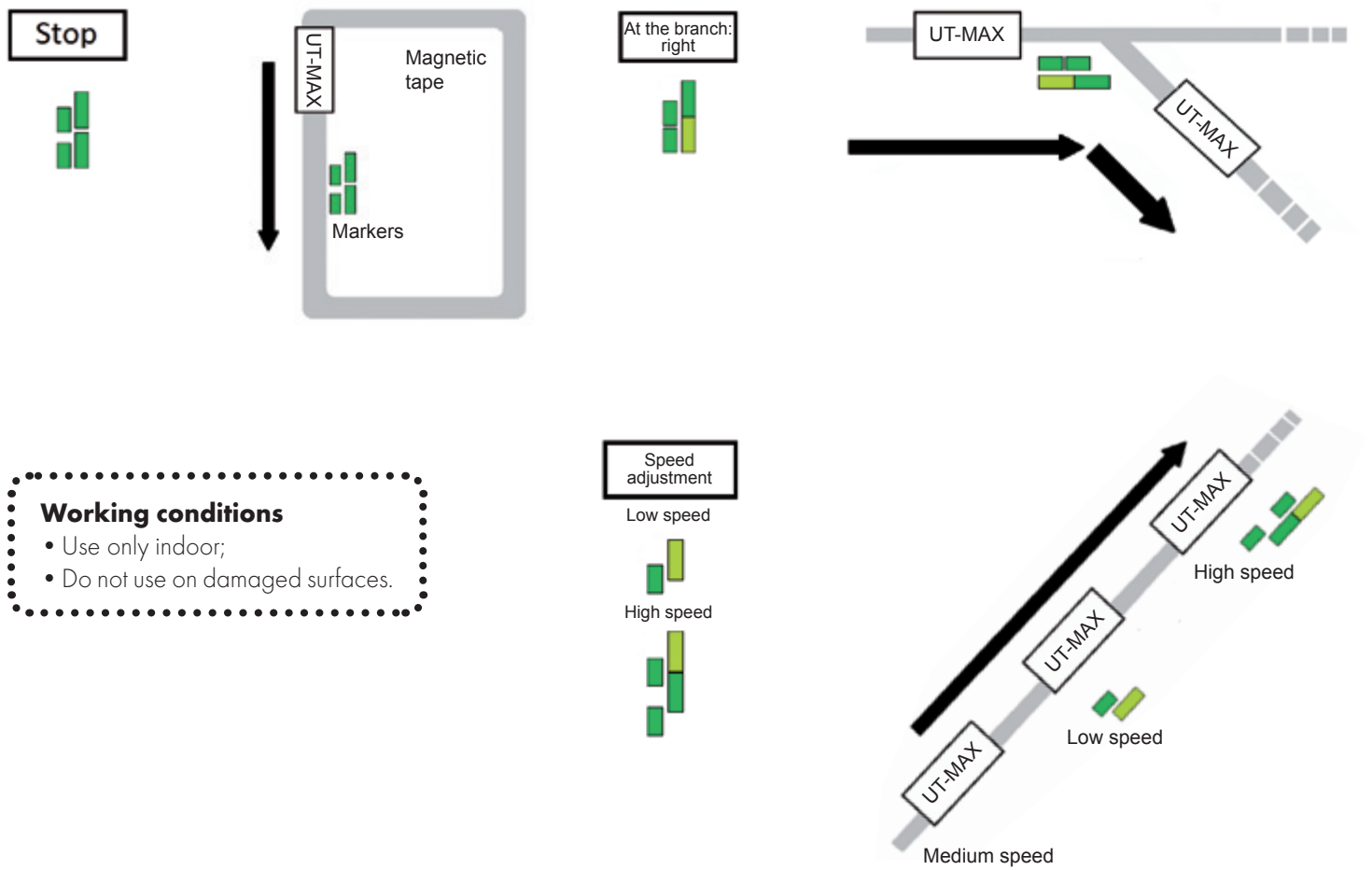
Accessories
Load lifting device
Mechanical towing hitch
Electromechanical towing hitch
USB cable
Batteries 33Ah
Charger
Reverse function management module
Buzzer
Free/power roller conveyor
Obstacle sensor (for reverse)
Lamp
Security reverse bumper
Security front bumper
Remote control by bluetooth
Remote control software for smartphone



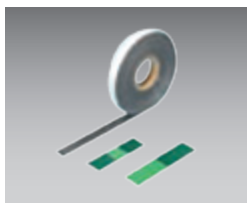
Vehicle Types	
Vehicle	Self-standing
	Tubular
	With loading platform

Route and stations setup

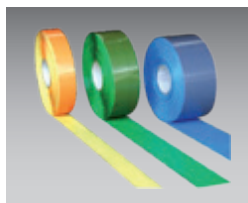
To plan a routes with stations, you only have to stick magnetic/coloured guides and markers on the floor.



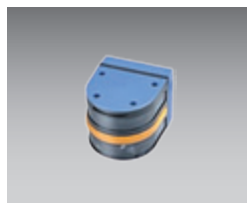
Accessories



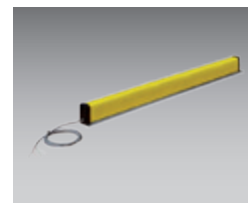
Magnetic tape;
Markers



Coloured stripe
(up to 16 colours)



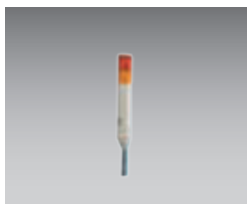
Obstacle sensor



Bumper



24V battery



Lamp



Charger



Tablet
or smartphone software



Button panel



Buzzer



Utek srl
Via Luciano Lama, 8
42023 Cadelbosco di Sopra (RE)
Tel. +39 (0)522.958945
Fax +39 (0)522.912181
info@utekvision.com - www.utekvision.com

Area distributor: